

# HYLAND RPA

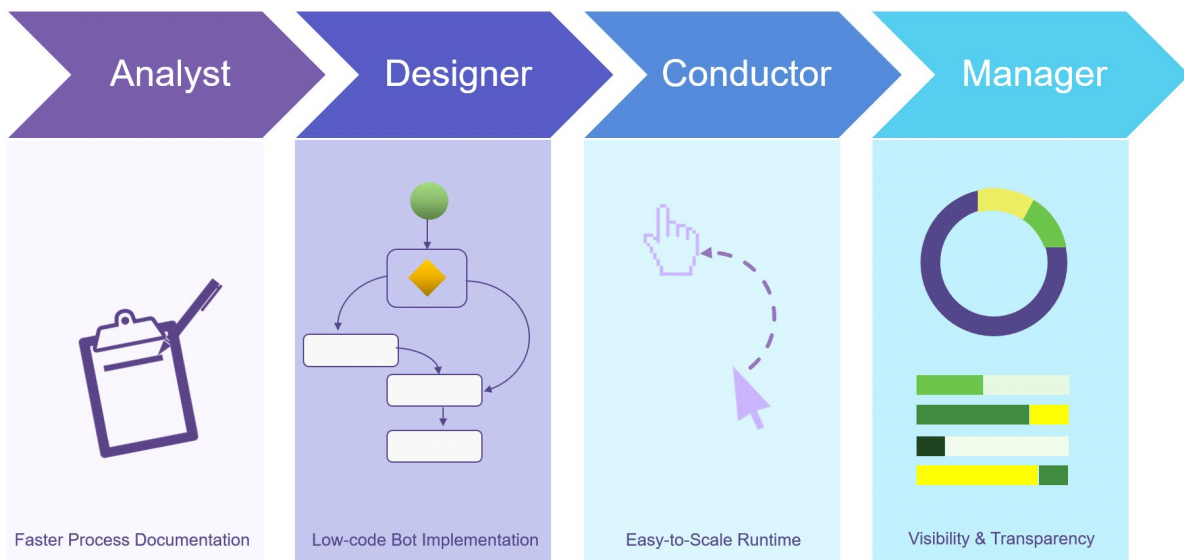
## SUMMARY

Hyland RPA accelerates digital processes by automating manual and repetitive tasks, freeing knowledge workers to spend time on activities most valuable to the organization. Through a robust suite of Robotic Process Automation (RPA) products, it covers all phases of automation from process analysis to bot management. Digitizing manual processes will increase productivity, improve the user experience and simplify system integration—resulting in streamlined business processes and reduced organizational costs.

## BENEFITS

- **Eliminates user clicks and keystrokes**, simulating human activities needed to execute manual tasks.
- **Performs work more accurately**, improving automation and ensuring that everything is complete.
- **Reduces the need for employees to navigate multiple** systems to complete their work.
- **Simplifies the integration between business applications** when systems are inaccessible to traditional integration tools.
- **Visually configured for faster implementation** and less maintenance of the solution over time.
- **Improves visibility over manual tasks** by providing a monitoring application to improve process efficiency.

## DESIGN



Hyland RPA pairs nicely with content services products in the Hyland portfolio, to remove manual efforts and integrate seamlessly with systems throughout your IT landscape and is a suite comprised of four different products:

- **Analyst** allows you to map processes and automatically produces documentation.
- **Designer** is used to build automations, implement bots and make changes to processes.
- **Conductor** runs automations and execute tasks.
- **Manager** monitors processes and boosts visibility.

## APPLICATIONS

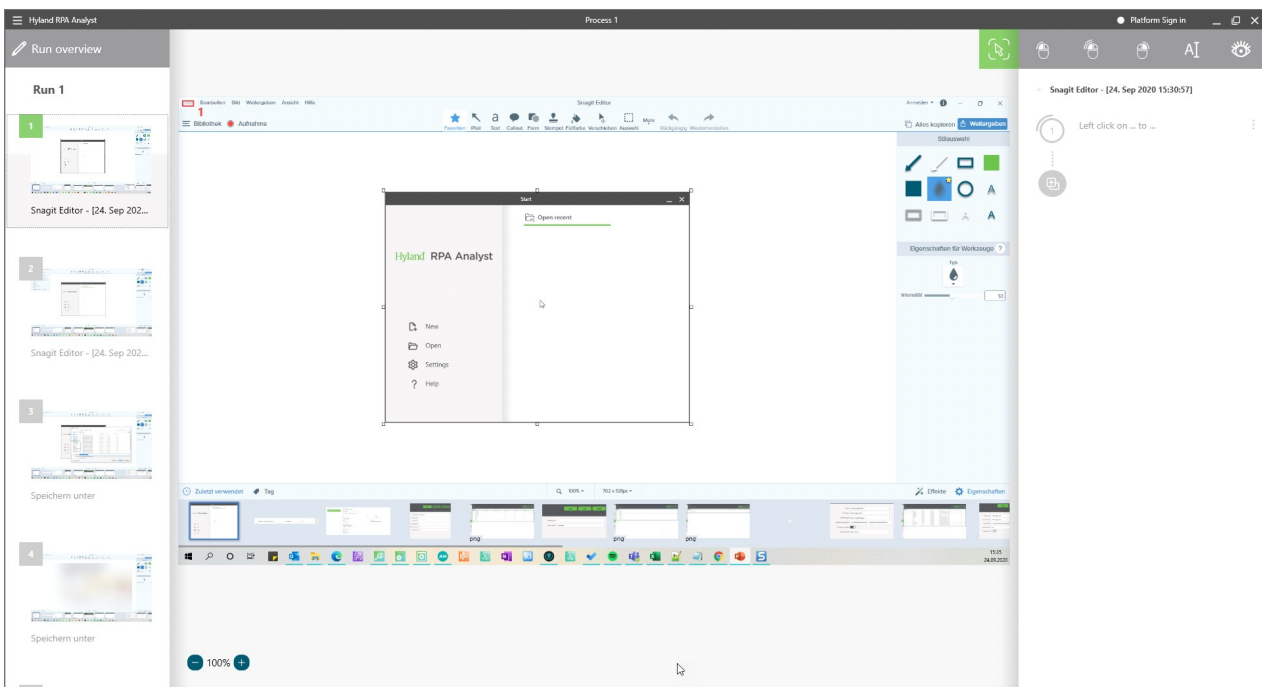
**Automate feature execution in multiple systems:** User interactions like clicking a button, performing keystrokes, and copying and pasting data have traditionally required a human to execute. Instead, Hyland RPA can leverage a digital user to perform the same actions—even starting the application if needed, and closing application dialogs after the process is complete. This means that the process will move forward more quickly and the employee is not burdened by repetitive work.

**Replicate data entry between systems** when integration is a challenge: When a business application is not easily accessible through an API or web service, the data entry is often manual. Hyland RPA can supply the values to the business system without the errors that would occur if performed by human users.

## KEY FEATURES

- **Automate user actions** like mouse clicks, keystrokes, shortcuts, and function keys.
- **Integrate Hyland RPA** with OnBase, Perceptive Content or Saperion content services applications.
- **Attended, unattended, or hybrid automations** give flexibility to support business needs.
- **Monitoring** makes it easy to identify process bottlenecks or inefficiencies through dashboards.
- **Visual configuration** and a clean intuitive interface means creating automations is easy.

## INTERFACE



The **Analyst** application is easy-to-use software that automatically documents process steps. The identified interactions are converted into editable process flows and enable a seamless process understanding.



The **Designer** application is a drag-and-drop, low-code interface for the intuitive configuration of RPA. Process diagrams are automatically created with the imported process documentation from the analysis step. The detailed fine-tuning enables fast bot building. The result is a process script—ready for runtime robots.



The **Manager** application reduces the complexity of managing and maintaining bot ensembles. With the real-time dashboard, processes can be monitored and controlled from anywhere. The highlight: All variables can be changed centrally and for all processes at the same time without having to modify individual scripts.

Learn more at [Community.Hyland.com](https://Community.Hyland.com)

